

# Drapery Hardware Catalog



*J.O.* european  
Designs

Quality in custom drapery Hardware



Tel: (760) 630-1435

Fax: (760) 509-4203

JOEuropeanDesign@gmail.com

www.JoDrapery.com



FS-101  
L-5-1/2" H-3-3/4"  
Base will match rod size



FS-102  
L-5-1/2" H-2-1/2"  
Base will match rod size



FS-103  
L-3" H-3"  
Base will match rod size



FS-104  
L-5" H-3"  
Base will match rod size



FS-105  
L-5" H-3"  
Base will match rod size



FS-106  
L-5" H-2"  
Base will match rod size



FS-107  
L-5" H-2"  
Base will match rod size



FS-108  
L-5" H-3"  
Base will match rod size



FS-109  
L-6-1/2" H-3-1/4"  
Base will match rod size



FS-110  
L-5-3/4" H-2-3/4"  
Base will match rod size



FS-111  
L-5-5/8" H-4-1/8"  
Base will match rod size





FS-112  
L-6" H-5-1/4"  
Base will match rod size

FS-113  
L-3-1/2" H-2"  
Base will match rod size

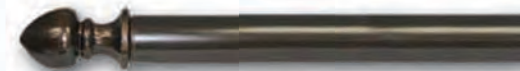
FS-114  
L-4-1/2" H-2-1/4"  
Base will match rod size

FS-115  
L-3" H-2"  
Finials for 1 1/2" or 1 1/4"

FS-116  
L-3" H-3"  
AVAILABLE IN ALL SIZES  
Base will match rod size



FS-117  
L-3" H-3"  
Base will match rod size



FS-118  
L-3-1/2" H-2"  
Base will match rod size



FS-119  
L-2-1/2" H-2-1/4"  
Base will match rod size  
Available in 3 Sizes



FS-120  
L-3-1/4" H-2-3/4"  
Base will match rod size



FS-121  
L-5" H-3-1/4"  
Base will match rod size



FS-122  
L-5-1/2" H-3-3/4"  
Base will match rod size



FS-123  
L-7" H-3-3/4"  
Base will match rod size



FS-124  
L-7-3/4" H-4-1/4"  
Base will match rod size



FS-125  
L-5-3/4" H-3-3/4"  
Base will match rod size



FS-126  
L-9" H-5"  
Base will match rod size



FS-127  
L-5-3/2" H-3"  
Base will match rod size



FS-128  
L-5-1/2" H-5-1/2"  
Base will match rod size



FS-129  
L-8-1/4" H-5"  
Base will match rod size



FS-130N  
L-7-1/4" H-6"  
Base will match rod size



FS-131  
L-3-1/2" H-3-1/4"  
Base will match rod size



FS-132  
L-4-3/4" H-2-1/2"  
Base will match rod size



FS-133  
L-5-1/4" H-2-1/2"  
Base will match rod size





**FS-134**  
L-6-1/4" H-2-3/4"  
Base will match rod size

**FS-147N**  
L-6-3/4" H-7-1/8"  
Base will match rod size

**FS-136**  
L-5-1/2" H-3"  
Base will match rod size

**FS-137N**  
L-8" H-4"  
Base will match rod size

**FS-138**  
L-3" H-1-1/2"  
Base will match rod size

**FS-139**  
L-6" H-2"  
Base will match rod size

**FS-140 END CAPS**  
AVAILABLE IN ALL SIZES  
Base will match rod size

**FS-141N**  
L-9-1/4" H-3-1/4"  
Base will match rod size

**FS-142N**  
L-5-3/4" H-4-3/4"  
Base will match rod size

**FS-143N**  
L-10-1/2" H-7"  
Base will match rod size

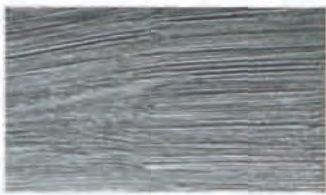
**FS-144**  
L-1-3/4" H-2"  
Base will match rod size

**FS-145**  
L-7-3/4" H-4-1/2"  
Base will match rod size

**FS-146N**  
L-3-1/2" H-2-1/4"  
Base will match rod size



*Colors*



PEWTER



WHITE PLAIN



BRUSHED BRONZE



PEARL



ANTIQUE GOLD



BLACK



BRUSHED ELEGANT



OLD PENNY



ANTIQUE RUSH



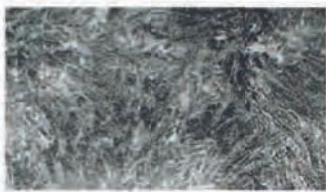
BRONZE MEDALLION



BRUSHED GOLD



MOHAGANY



ANTIQUE SILVER



BRONZE PLAIN



RUSH WASH



BRUSHED COPPER

*Choose your finish color.  
 we also match most colors  
 you provide us with.*



TB-700  
 1½" Solid round rod  
 ¾" Hollow round rod  
 1" Hollow round rod  
 1-¼" Hollow round rod  
 1-½" Hollow round rod  
 2" Hollow round rod



TB-704  
 Quad - Rope Twist Rod  
 ¾" Diameter  
 ⅜" Solid - Rope  
 1-¼" Diam  
 ½" Quad-Rope Twist Rod  
 1-⅞" Diam  
 ¾" Quad-Rope Twist Rod  
 2-⅝" Diam  
 1" Quad-Rope Twist Rod  
 2-⅜" Diam  
 ¾" Quad-Rope Twist Rod



TB-708  
 1½" Solid Twist rod  
 5/8" Solid Twist rod



TB-702  
 1½" Diam  
 1½" Double-Rope Twist Rod



BKS-119N  
 ADJUSTABLE BRACKETS  
 We have adjustable brackets available  
 to make installation easy.



EMS-503  
 Our custom curb rod radios and finials are  
 made at customer's measurement.  
 Rings can be welded to rods also.  
 AVAILABLE IN ALL SIZES



BKS-600  
Clear 3"  
AVAILABLE IN ALL SIZES



BKS-613N  
CENTER SUPPORT  
AVAILABLE IN ALL SIZES



BKS-609N  
Clear 3"  
AVAILABLE IN ALL SIZES



BKS-601  
REGULAR BRACKETS  
Clear 3"  
AVAILABLE IN ALL SIZES



BKS-616N  
C-RING CENTER SUPPORT  
AVAILABLE IN ALL SIZES



BKS-615N  
AVAILABLE IN ALL SIZES



BKS-610  
Clear 2"  
AVAILABLE IN ALL SIZES



BKS-602  
Clear 3"  
AVAILABLE IN ALL SIZES



BKS-606  
1st rod 3" Clear,  
2nd rod 5" Clear  
AVAILABLE IN ALL SIZES



BKS-611  
Clear 2"  
AVAILABLE IN ALL SIZES



BKS-603  
Clear 3"  
AVAILABLE IN ALL SIZES



BKS-614N  
AVAILABLE IN ALL SIZES



BKS-608 DOUBLE BRACKETS  
AVAILABLE IN ALL SIZES



BKS-618N  
DOUBLE C-RING BRACKET  
AVAILABLE IN ALL SIZES





SA-400  
Rod length customer measure



SA-401  
Rod length customer measure



SA-402  
Rod length customer measure



SA-403  
Rod length customer measure



TBK-900



TBK-901

You can order tiebacks with most of our finial.



ACS-200  
Our wands come with any size ring, at any length, and with most finials as the handle.



**Regular Twisted Rings**

- Twisted Ring 1 1-1/4"
- Twisted Ring 2 1-1/2"
- Twisted Ring 3 1-3/4"
- Twisted Ring 4 2"
- Twisted Ring 5 2-1/2"



**Regular Round Rings**

- Round Ring 1 1-1/2"
- Round Ring 2 2"
- Round Ring 3 2-1/2"



**Regular C- Rings**

- C Ring 1 1"
- C Ring 2 1-1/2"
- C Ring 3 2"
- C Ring 4 2-1/2"

**1/4 Solid And 3/8 Solid Round Forget Steel Rings**

- Ring 1 1-1/2"
- Ring 2 2"
- Ring 3 2-1/2"
- Ring 4 3"



SA-404N



SA-405N



SA-406N

**Bay Windows.**

We can mitre rods together at any angle you specify making a bay windows one continuous rod.



# Emblems



EMS-501  
L-29" H-9-1/2"



EMS-502  
L-29-1/8" H-9-7/8"



EMS-500  
L-33" H-8-5/8"



FS-147  
\*L- 6 1/8" X H- 3 9/16"  
Base will match rod size



FS-151  
\*L- 7 1/8" X H- 3"  
Base will match rod size



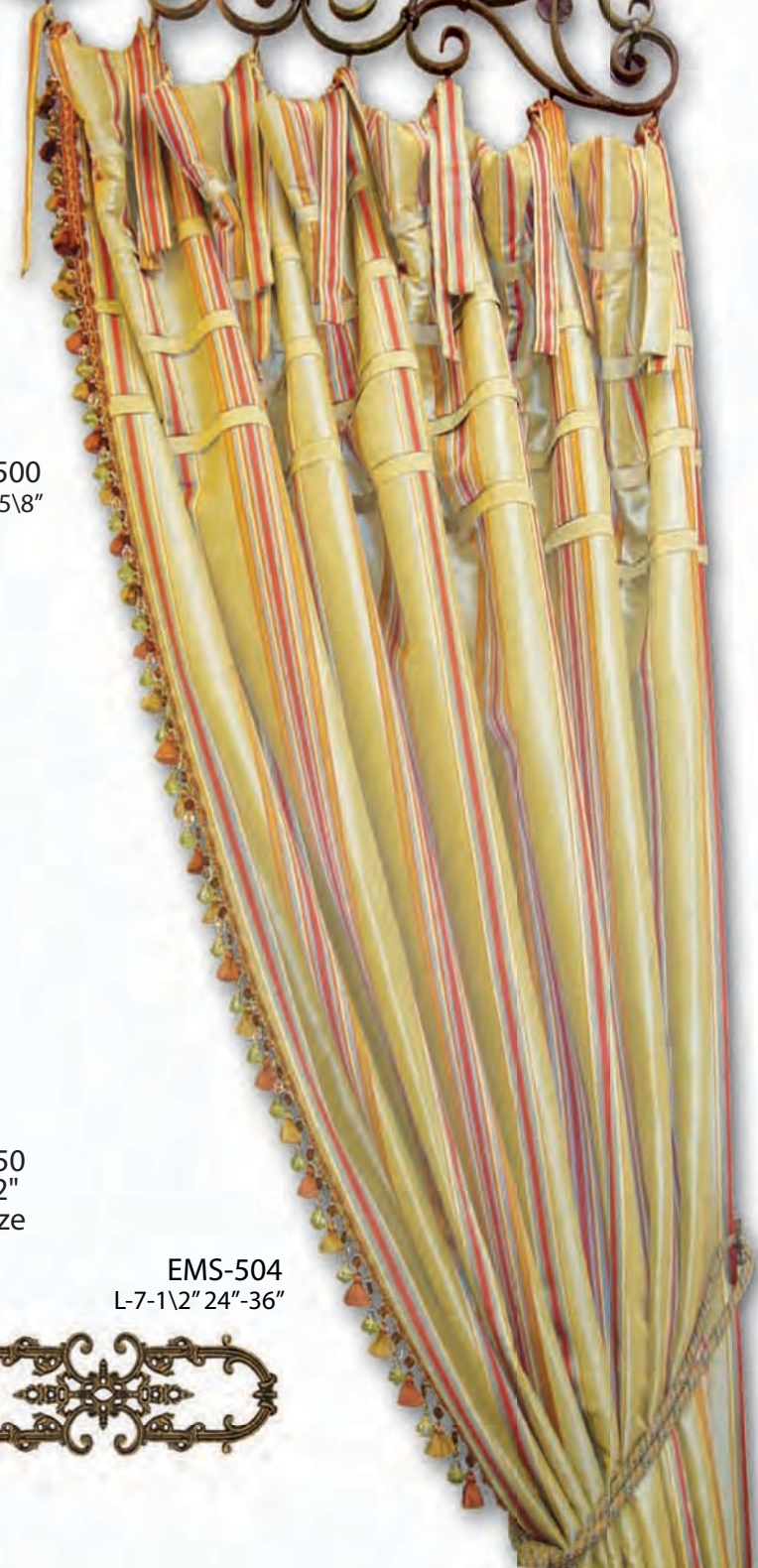
FS-150  
\*L-5 1/2 " X H- 3 1/2"  
Base will match rod size



EMS-504  
L-7-1/2" 24"-36"



EMS-510  
L-48-1/4" H-17-1/2"





SH-314  
3-1/4" Square



SH-315  
3-1/4" Diam.



SH-316  
4-3/4" Diam.



SH-317  
2-5/8" Diam.



SH-318  
3-1/4" Square.



SH-319  
3-1/2" Square.



SH-320  
4" Square



SH-322  
L-5-1/2" H-5-1/2"



SH-329  
2" Diam.



SH-330  
3-1/2" Diam.



SH-324  
6-3/8" Diam.



SH-325  
4-3/4" Diam.



SH-326  
5-1/2" Diam.



SH-327  
3-1/4" Diam.



ACS-203  
1/2" Diam



ACS-204  
1/2" Diam





*Swag Holders*



SH-300  
 4-1/8" Square



SH-301  
 4" Diam.



SH-302  
 4" Diam.



SH-303  
 4-5/16" Square



SH-304  
 3-3/4" Diam.



SH-305  
 3-3/4" Diam.



SH-306  
 4-3/4" Square



SH-307  
 W-5-3/4" H-5-1/2"



SH-308  
 5-7/16" Diam.



SH-309  
 4-3/4" Diam.



SH-310  
 3" Diam.



SH-311  
 W-5" H-5-1/8"



SH-312  
 W-7-1/4" H-4-3/8"



SH-313  
 4-1/4" Diam.



ACS-201  
 1/2" Diam



ACS-202  
 1/2" Diam